



THE CASTLEREAGH

by fassnidge

FUNCTIONS & EVENTS



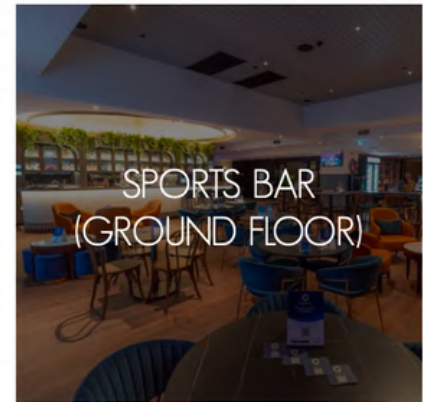
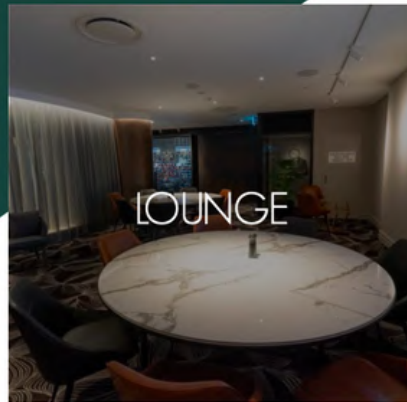
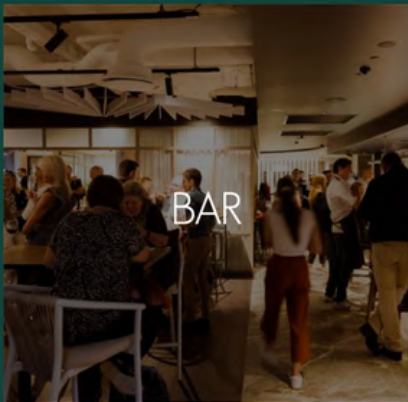
The Castlereagh is a multifunctional space in the heart of Sydney's CBD, the ideal location to host your next event.

Catering for corporate, team building, PR & launch events, private functions and more...

The Castlereagh events and functions team look forward to helping you bring your visions to life.



Versatile spaces that can cater to all forms of events and functions with the capabilities to hire the whole space for a weekend event.





REAL . CHEEKY . DINING

CANAPE PACKAGES

PRICE

\$52 Per Head

5 Canapes + 1 Substantial

\$60 Per Head

4 Canapes + 2 Substantial

Menus are subject to change & ingredients vary
based on seasonality & availability

(V) Vegetarian, (VG) Vegan, (GF) Gluten Free, (DF) Dairy Free

CANAPES BITE SIZE

Oysters Natural, Lemon (gf) - if available

King Fish Escabeche (gf)

Prawn Toast, Lemon

Chicken Liver Parfait, Cornichon, Toast

Sausage Roll, Suckling Pig Mince, Apple Butter

Corned Beef & Curd

Ham Hock Croquettes, Horseradish Crème Fraiche

Vegetarian Croquettes, Horseradish Crème Fraiche (v)

Pink Gin Compressed Watermelon, Fetta, Mint (v)

Corned Beef, Compressed Watermelon, Fetta

Roast Beetroot, Potato Mayonnaise Toast (v) (spoon for gf)

Veggie Turnover (v)

SUBSTANTIALS

Chicken Schnitzel, Slaw

Pork Belly Diced, Apple Butter

Slider

- Beef, Cheese, Sauce

- Pulled Pork, Slaw, Apple Butter

- Field Mushroom, Leaves, Sauce (v)

Cassaree Beef Cheek, Shaved Parmesan

Fish & Chips

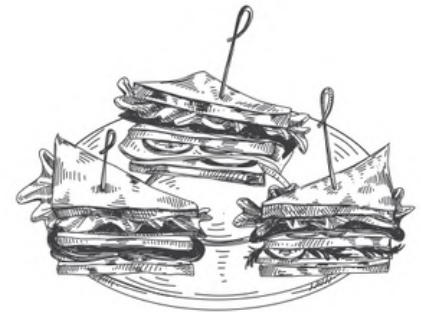
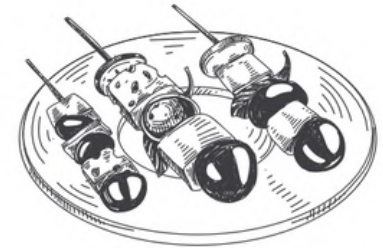
Caramelised Onion, Wild Green, Ricotta Tart (v)

DESSERT CANAPES

Eton Mess \$8ea

Brownies, Whipped Cream \$8ea

Ice Cream Sandwich, Dulce De Leche \$8ea



FEASTING MENU (MIN 10)

A feed fit for royalty or just a group of friends
looking for something different.
Need at least 72 hours notice to order

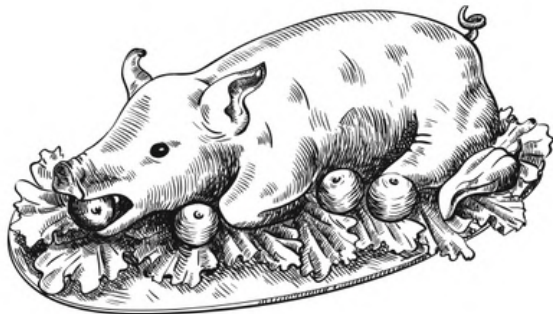
Pre-set on Table
Bread, Olive Oil & Whipped Butter

Choice of 1 from below
Whole Pig
\$90PP

Chef Choice Seasonal Sides
Whole Pig brought out on the board &
carved in front of you

Slow Cooked Lamb Shoulder
\$75PP

Chef Choice Seasonal Sides



GROUP MENUS (MIN 16)

\$75PP

Glass of Champagne
Bread, Extra Virgin Olive Oil,
Whipped Butter on the Table
Choice of 1 Small
Choice of 1 Main

GRAZING STATIONS (MIN 20)

Grazing Table \$25PP (an hour service)
3 Meat Chef Choice, 3 Cheese Chef Choice,
Chutney, Pickles, Muscatels, Dried Fruit, Nuts Lavosh,
Crackers, Charred Sourdough

Dessert \$20PP (an hour service)
Eaton Mess, Brownies, Whipped Cream, Cinnamon
Doughnuts, Dulce De Leche

Menus are subject to change & ingredients vary
based on seasonality & availability

(V) Vegetarian, (VG) Vegan, (GF) Gluten Free, (DF) Dairy Free

GRAZING MENU

\$75PP (MIN 10)

A warm family feel as you come together and share the experience of eating together while the conversation flows.

72 hours notice to order
Choice of 2 Dishes, placed in the middle of the table with service cutlery, then shared

- Slow Cooked Lamb Shoulders In Pots + Seasonal Sides
 - Porchetta + Seasonal Sides
 - Roast Chicken + Seasonal Side
- Full Fish Baked (MARKET) + Seasonal Sides

Additional Entrees \$15
Additional Dessert \$15

Menus are subject to change & ingredients vary based on seasonality & availability

(V) Vegetarian, (VG) Vegan, (GF) Gluten Free, (IDF) Dairy Free



BEVERAGE PACKAGE
(min 10 pax)

BEVERAGE PACKAGE
2 hours
Extra Hour / \$20pp
Extra 2 Hours / \$40pp

BEVERAGE PACKAGES

CLASSIC \$40PP

Mimosas
House Sparkling
House White
House Red
Standard Tap Beer
Post Mix Soft Drink / Juices



AUSTRALIAN \$60PP

Mimosas
Choice of 1
Australian Sparkling
Australian White
Australian Red
Craft Beer plus Standard Tap Beers
Post Mix Soft Drink / Juices



Add Spirits \$30pp - choice of spirits
Add Cocktail on arrival \$18pp



SPACE	COCKTAIL	BANQUET
Sun Parlour	60	40
Balcony	30	20
Wine Room	40	30
Lounge	40	30
Bar	50	40
The Castlereagh	210	150
Sports Bar	100	

PACKAGE ADD ON'S

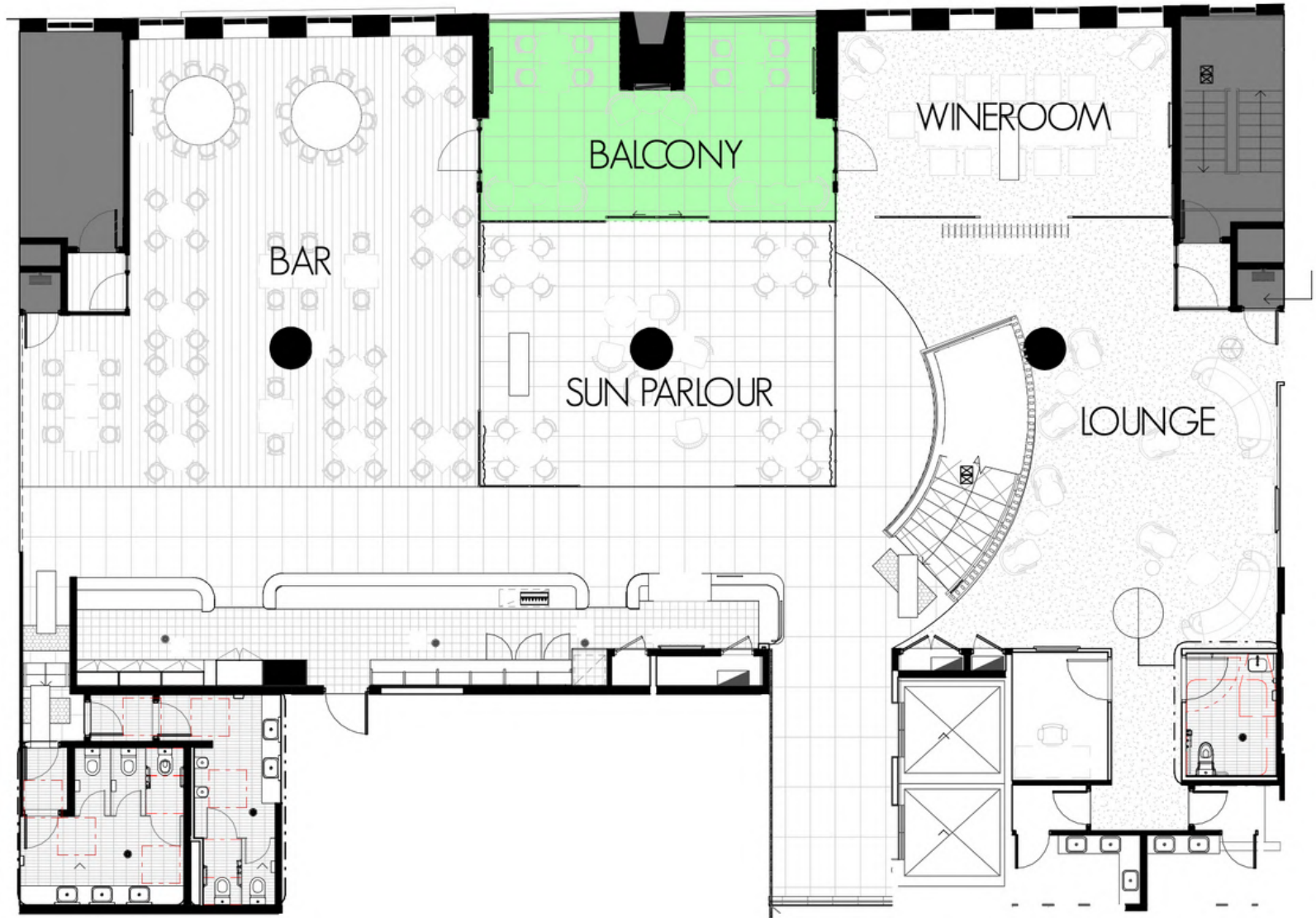
- Barista
- All Day Coffee Station
- Production Hire in PA & Wireless Microphone
- Venue Theming inc Florist, Media Wall, Backdrop, Balloons
- Entertainment inc Live Musician or DJs, Photobooth

MEETING CAPABILITIES

- HDMI TV Connections
- Free WiFi
- Private Areas
- Zoning of Inhouse Audio

Please contact our friendly event team for more information

FLOORPLAN



VISITING THE CASTLEREAGH

TRANSPORT & PARKING

A sanctuary in the city, whether you had a busy day or just finished work, The City Tattersalls Group is a haven to sit, relax and enjoy the facilities we have to offer.

THE CASTLEREAGH

199 Castlereagh Street,
Sydney NSW 2000

PARKING

Recommended Parking Facilities:

Hilton Carpark 24hours
Managed by Secure Carpark
Enter Carpark via Pitt street
Piccadilly Carpark
Managed by Secure Carpark
Enter Carpark via Castlereagh street
This is the main carpark for Piccadilly
Stockland Mall

Citigroup Carpark
Managed by Wilson Carpark
Enter Carpark via Pitt Street
(next to the Hilton driveway)

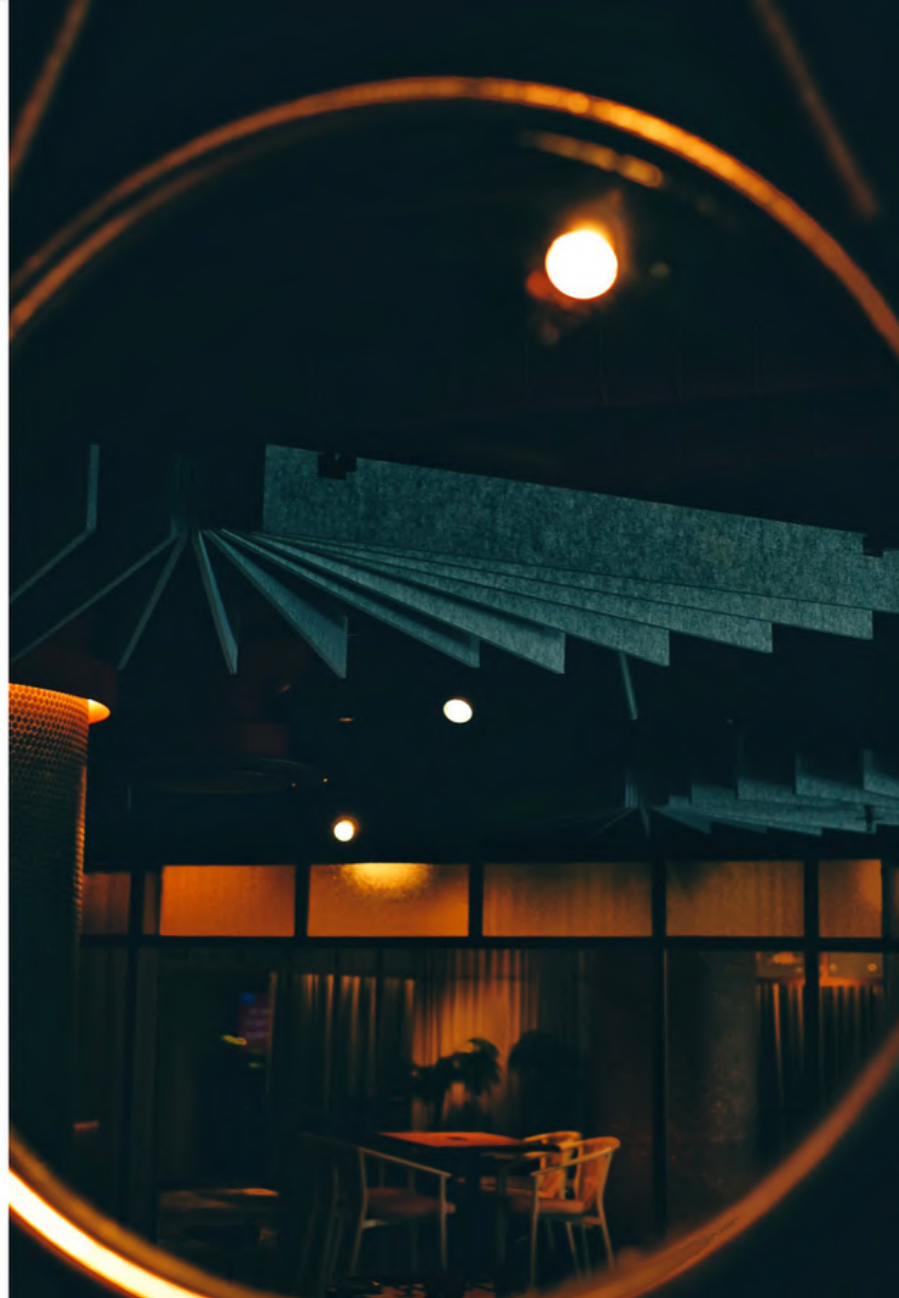
ACCESSIBILITY

The Castlereagh Level one is accessible via a lift. Special assistance can be provided and arranged by calling ahead to the Duty Manager.

CONTACT US

✉ clayton@byfassnidge.com.au
🌐 thecastlereaghclub.com.au/
📷 [the_castlereagh](https://www.instagram.com/the_castlereagh)
📘 The Castlereagh

Customer Service Phone:
02 9267 9421
Functions Phone:
02 9287 6401



THE CASTLEREAGH

by fassnidge